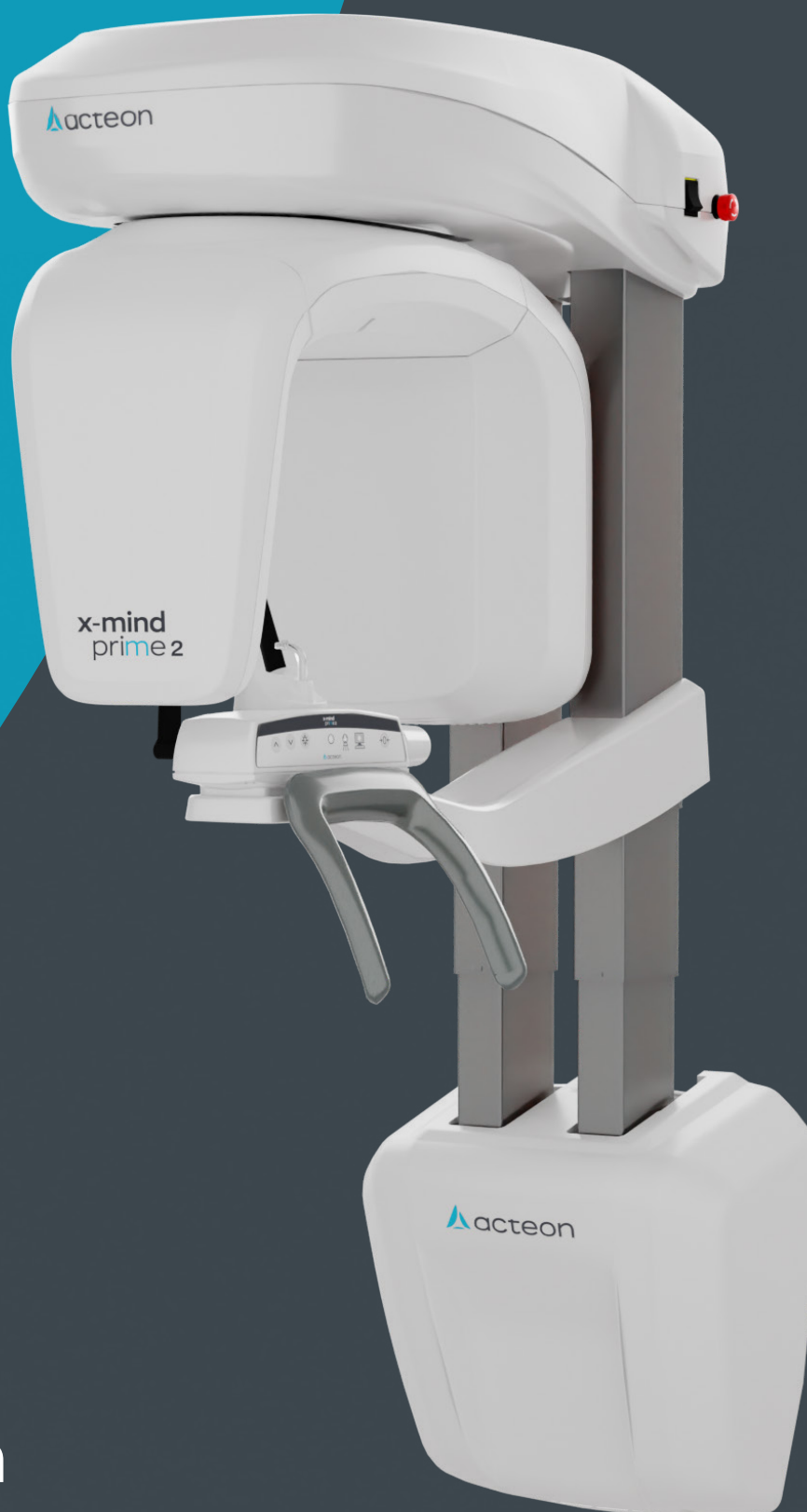


Digital dental imaging

# x-mind prime 2

**EASY IS THE NEW SMART !**



# Easy Acquisition, Effective Workflow

2D diagnosis is more accessible than ever with a smart and compact solution.

X-MIND® prime is an intelligent device that combines advanced technology with user-friendly operation. This innovative unit provides essential diagnostic tools in a compact and accessible design.



## Ergonomic and user-friendly design

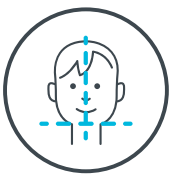
Reduce operator interventions and increase patient comfort.



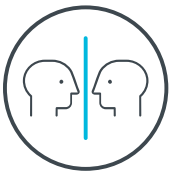
EASY 2D DIAGNOSIS



EASY INSTALLATION



EASY POSITIONING



EASY TRAINING



EASY USER INTERFACE



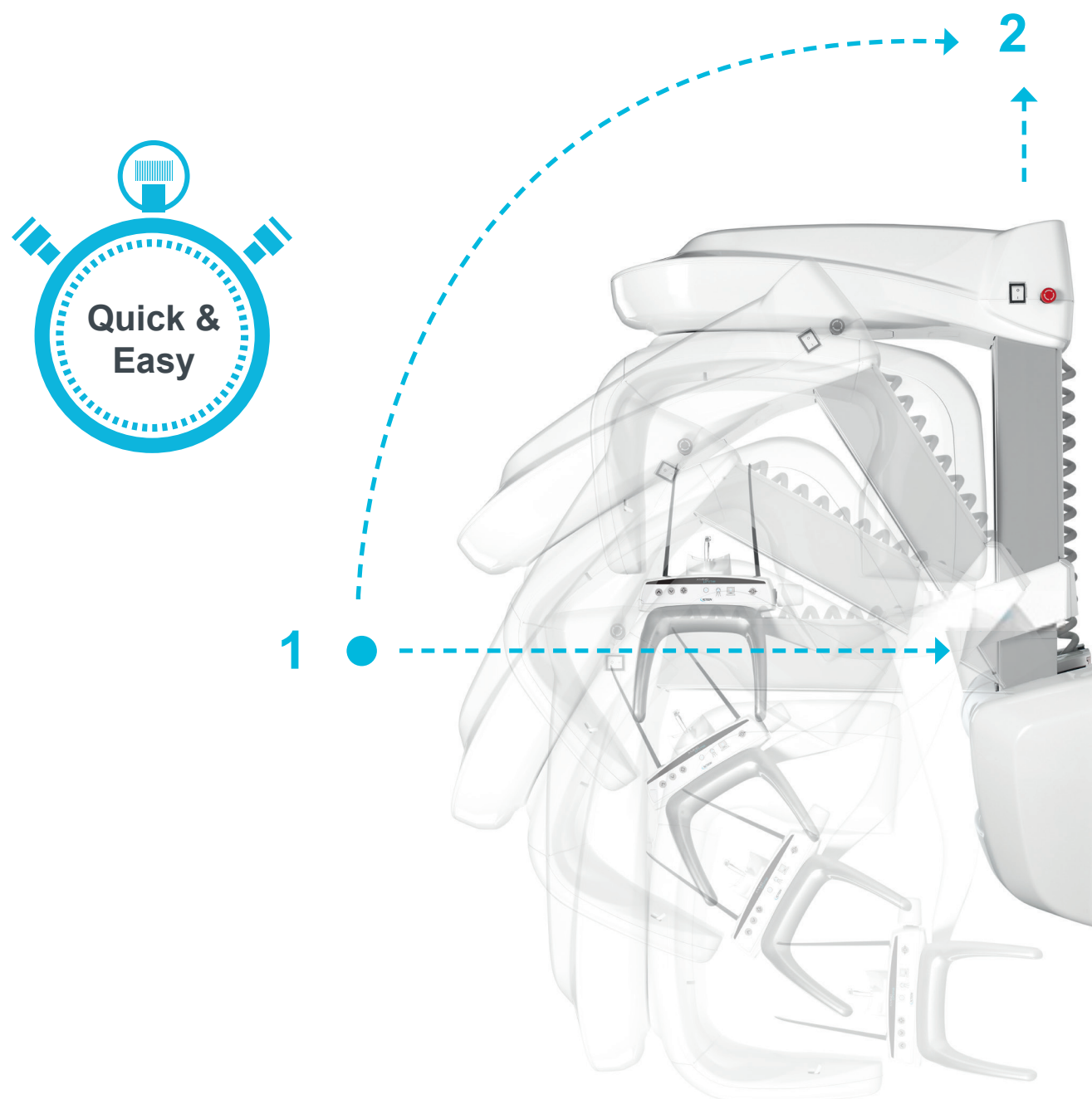
# Unmatched speed of installation

X-MIND® prime is ready to install! Delivered completely assembled at your practice, you are all set-up in only one hour.

## As simple as one box, one technician, two steps and that's it!

It does not interrupt the daily work and operations of the office, helping you to save time.

X-MIND® prime's open-space configuration accommodates almost all types of patients and is easily accessible for wheelchair users, thanks to its zero-footprint design.

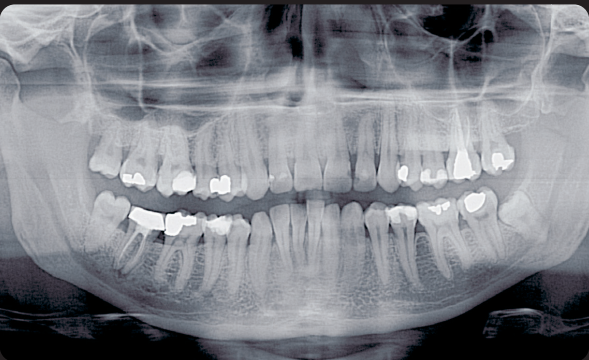




# Achieve a quick complete oral screening

Provide a global check-up with high-quality panoramic images.

With X-MIND® prime, benefits from accurate panoramic examinations, improved communication with your patients, minimum time for examinations preparation and sharp image at first view.

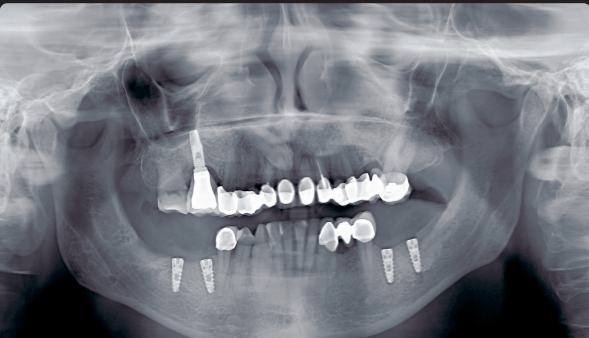


Interproximal caries on 21 and 22.  
Endodontic treatment and apical lesion on 47.



Wisdom teeth positioning.

Follow-up your treatment and boost the communication with your patients.



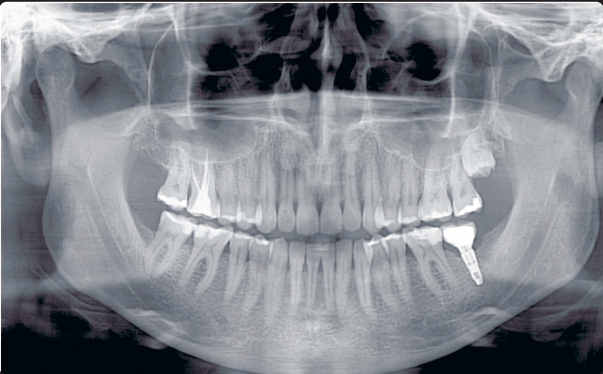
Verify the implant positioning right after the surgery.



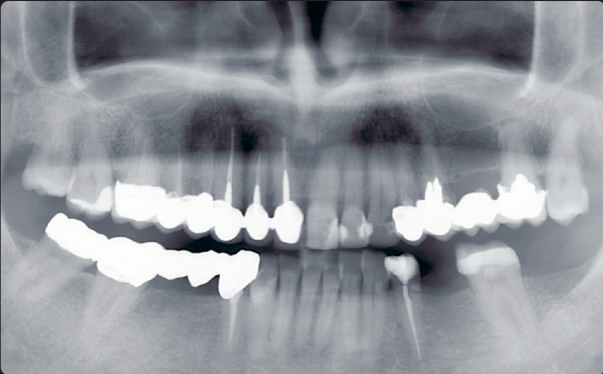
Check the endodontic treatment performed on the 47.

# Rely on a comprehensive set of 2D exams

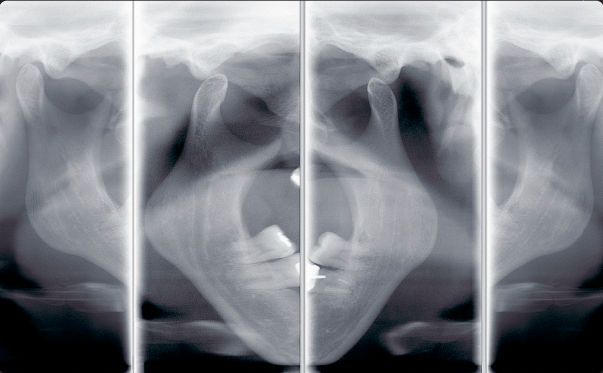
X-MIND® prime provides a comprehensive range of 2D exams designed to meet the diverse needs of general dentistry, including dental panoramic imaging, temporomandibular joint assessments and maxillary sinus evaluations.



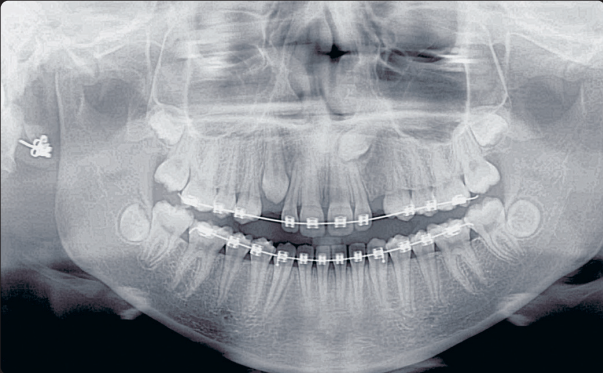
Dental panoramic



Maxillary sinuses



Temporomandibular joint



Child panoramic



Half-panoramic  
Left & right



Bitewing  
Left & right



Frontal



## Easy and reliable patient positioning

To maximize productivity, X-MIND® prime is specifically designed to reduce the patient preparation time.

### Smooth patient positioning

Natural face-to-face design supported by alignment lasers for correct patient positioning.



#### EASY POSITIONING

### Simple control panel

The intuitive control panel, conveniently positioned below the chin support, ensures efficient and accurate patient positioning. Easy settings and a fast examination process contribute to a smoother and more productive patient workflow.



## Advanced functionality for intuitive navigation

**acteon**   
**imaging suite**

The Acteon Imaging Suite software provides seamless navigation and powerful features. It allows you to manage all your images, from scanning to viewing, across all ACTEON® imaging devices (CBCT, Panoramic, intraoral digital X-ray, intraoral camera, etc.) and more.

- Easy to use interface and integrates with many patient management softwares
- Distance and angle measurement
- Custom patient report
- Superior design, clean lines, panoramic image detail optimisation filter
- MAC®, Windows®, Twain and DICOM compatible



# Meet the 2D Prime Family

X-MIND® prime is available in three configurations: 2D wall mounted, 2D Ceph and 2D floor to suit all installation and **clinical demands**.



**X-MIND® prime WALL 110-240V**

Order code: W1200001



**X-MIND® prime CEPH 110-240V**

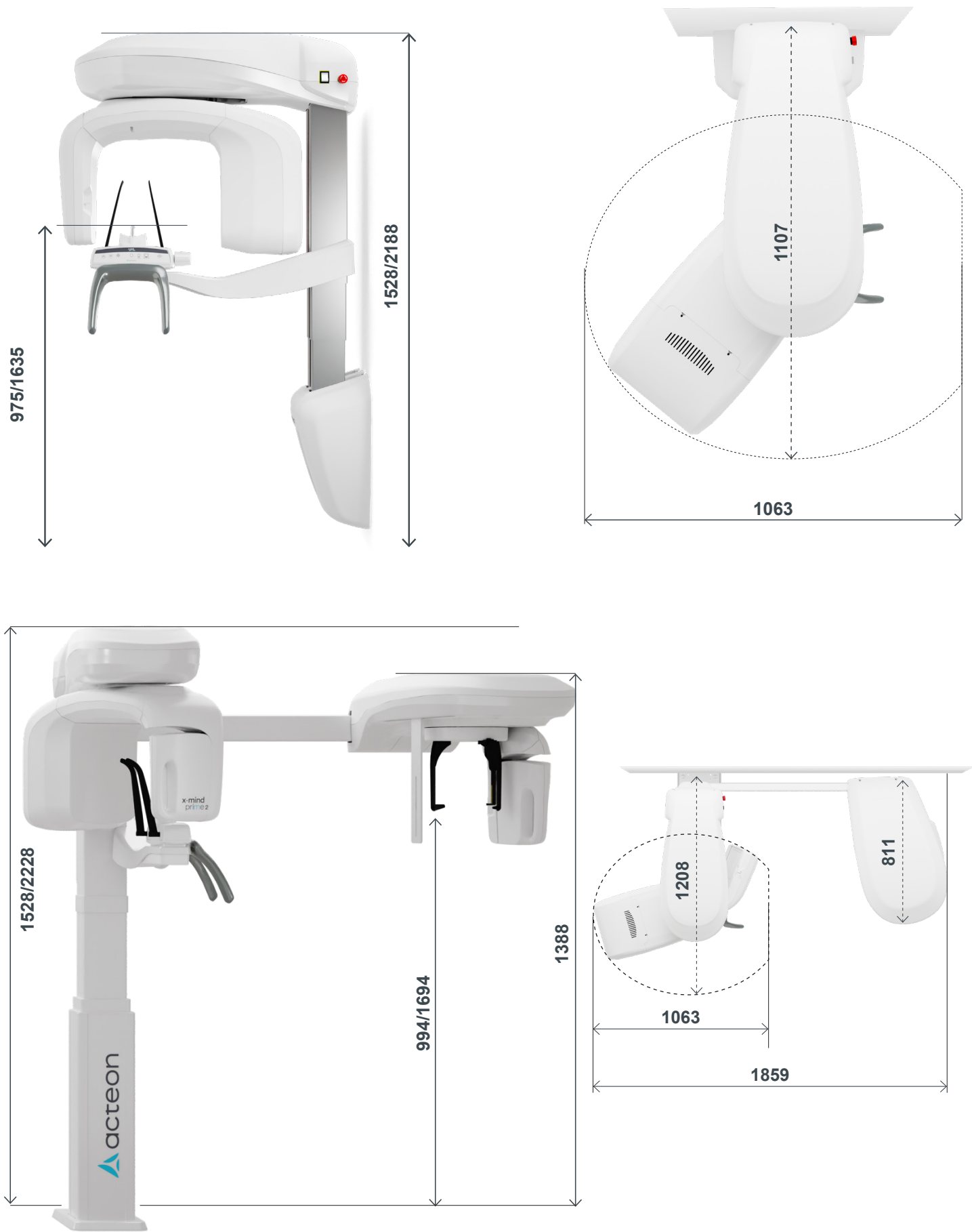
Order code: W1200009



**X-MIND® prime FLOOR 100-240V**

Order code: W1200001.FL

# Dimensions (all quotes in mm)





# Anytime at your side.

At ACTEON, we are dedicated to offering more than just **top-quality products**; we are committed to providing an exceptional customer experience at every stage. Our extensive **range of exclusive services** ensures that **you are supported as both a professional and a customer.**



## Education and training:

Whether you're just starting or aiming to expand your expertise, **ACTEON's education platforms** offer a flexible and accessible **solution for all your learning needs.**



## Warranty extension:

We guarantee that your experience with ACTEON will always be at the highest level, **giving you confidence in your investment** and ensuring that your equipment continues to perform at its best.

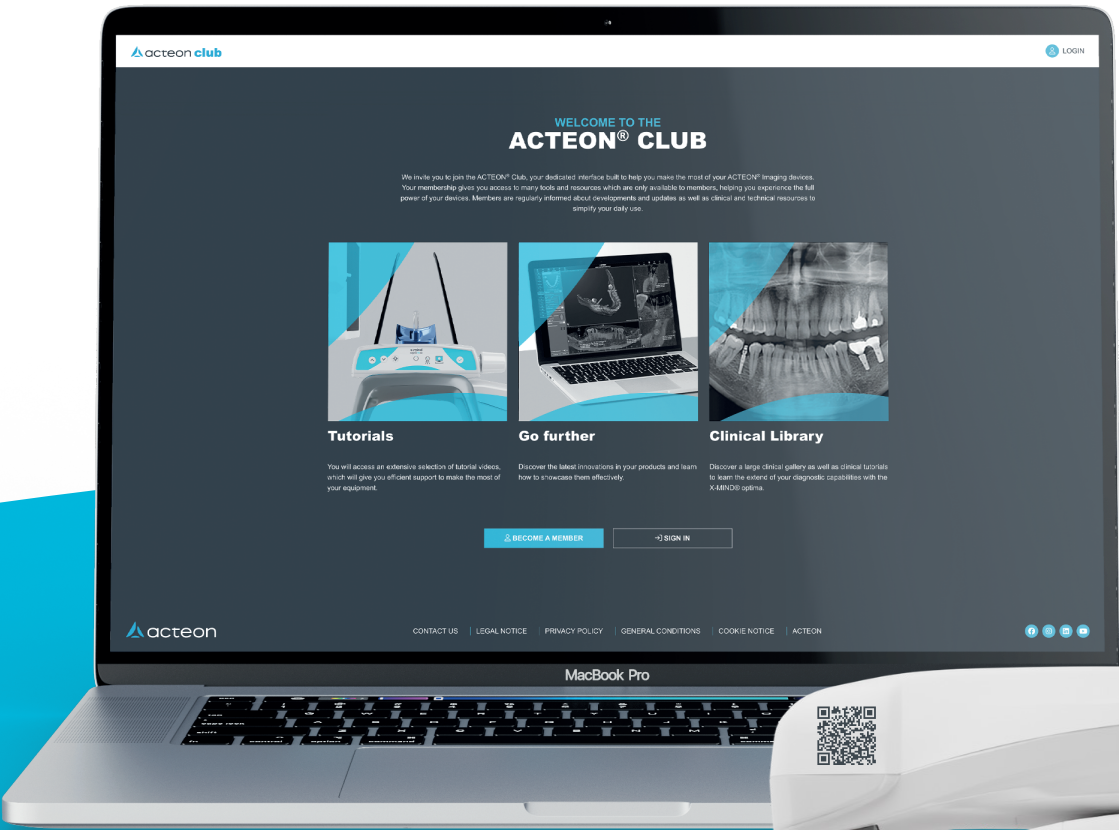


## Customer care:

Our **teams of experts** are always by your side, empowering you to **achieve the best outcomes** while enhancing your confidence and satisfaction.

# Expand your skills.

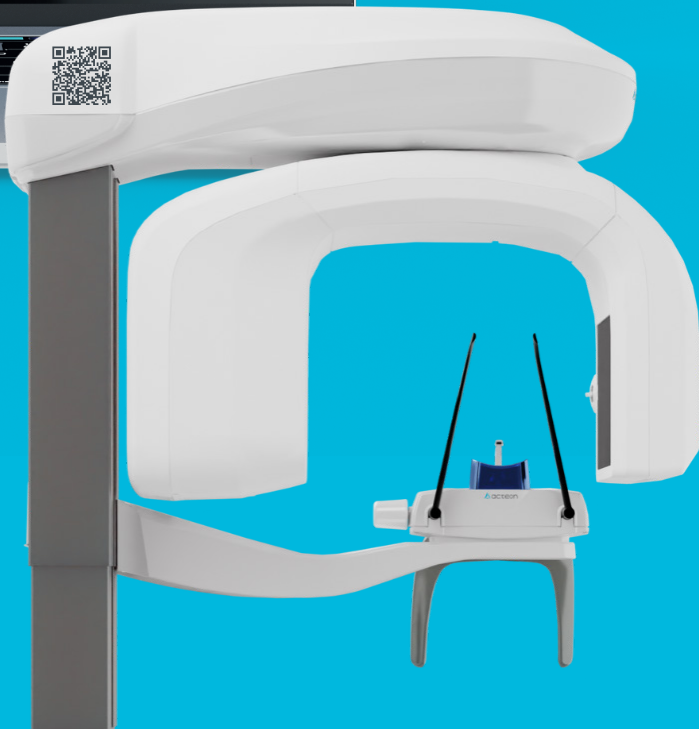
Choose X-MIND® prime and **gain membership to the exclusive ACTEON Club**, unlocking a world of premium content such as **video tutorials, webinars, tip and tricks** and much more.



Scan directly on your device



acteon-club.com





## **DE GÖTZEN**

A company of ACTEON® Group

**Strada Provinciale  
Busto-Cassano n.3,  
21054 - Fagnano Olona (VA)  
Italy**

**Tel: +39 0 331 376760**

**[info@acteongroup.com](mailto:info@acteongroup.com)**

Follow-us



X-MIND® prime are manufactured by de Götzzen (a company of the ACTEON® Group) and distributed by ACTEON®. They are Class I medical devices with type B applied parts according to the IEC 60601-1 classification. To obtain X-MIND® prime registration information in your country, please refer to your local sales manager.